

**Dear colleagues,**

welcome to Münster, Germany's most liveable city.

To improve the training in the field of neurovascular surgery, particularly in operative management of aneurysms, we try to simulate a real surgery with our Taiba Aneurysm Model. Endoscopic assisted endovascular creation of cerebral aneurysms in different locations in cadaveric heads preserve the anatomy of the brain and therefore the skills such as opening the Sylvian fissure, evacuating subarachnoid blood, opening the lamina terminalis, application of the clip and avoidance of injury to surrounding neural and vascular structures can be simulated with this model.

Inviting worldwide leaders in the field of vascular neurosurgery we aim to provide a hands-on cadaver workshop focusing on step-by-step demonstration and dissection.

Together with our staff we are looking forward to providing you with an excellent learning opportunity and an enjoyable stay in our city of Münster.

Yours sincerely,

**Prof. Uta Schick, MD, PhD**

**Khairi Daabak, MD**

## INFORMATION

### Organiser

Clemenshospital Münster  
Department of Neurosurgery  
neurochirurgie@clemenshospital.de



Prof. Uta Schick, MD, PhD



Khairi Daabak, MD

### Target Audience

Practicing neurosurgeons, fellows and residents in training who are interested in the most recent developments in vascular neurosurgery.

### Learning Style

Introductory lectures followed by hands-on cadaver workshop. Microscopes, clamps, micro-instruments, clips and high speed drills will be readily available at all stations (3 participants per station).

### Aims & Objectives

Identify anatomical avenues for the safe exposure of both superficial and deeper intracranial structures while approaching deep seated cerebral aneurysms. Familiarize trainees to microsurgical principles of clipping aneurysms; proximal control, dissecting the neck of the aneurysm, temporary clipping and clip reconstruction of the parent vessel.



Prosektur der Anatomie  
Vesaliusweg 2-4  
48149 Münster  
[campus.uni-muenster.de/prosektur.html](http://campus.uni-muenster.de/prosektur.html)

## CLEMENS HOSPITAL

AKADEMISCHES LEHRKRANKENHAUS DER  
WESTFÄLISCHEN WILHELMS-UNIVERSITÄT

Düesbergweg 124  
48153 Münster

Tel.: 0251 976-0  
Fax: 0251 976-44 40  
E-Mail: [info@clemenshospital.de](mailto:info@clemenshospital.de)

Eine Einrichtung der Alexianer und der  
Clemensschwestern.

Nähere Informationen finden Sie unter  
[www.clemenshospital.de](http://www.clemenshospital.de)



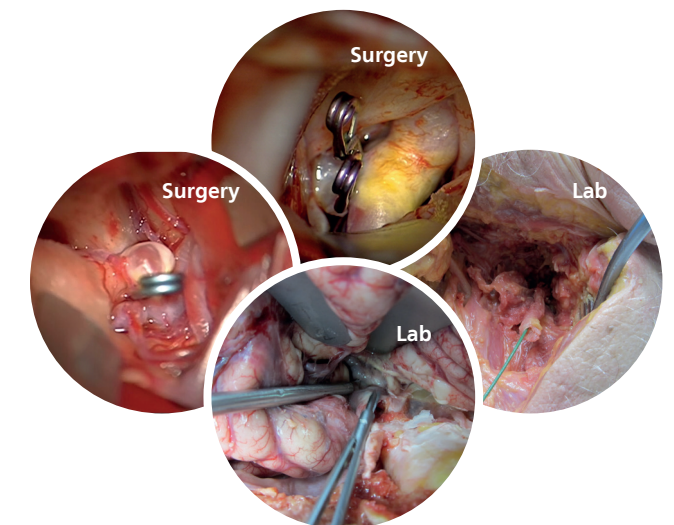
Approaching Endovascular Created Cerebral Aneurysms  
in Cadaveric Heads: Simulation of Real Surgery

## 3rd International Hands-on Cadaver Workshop

**Microsurgical Approaches to the Skull Base**  
**9th – 10th December 2017**

Guests:

Prof. A. Krisht, MD, FACS; ANI Little Rock (USA)  
Prof. H. Bertalanffy, MD, PhD; INI Hannover (Germany)



## 3rd International Hands-on Cadaver Workshop: Microsurgical Approaches to the Skull Base

**Saturday, 9th December 2017**

**07.30 | Registration**

**08.00 | Opening**

*Schick*

**08.10 | Lecture**

Surgical anatomy of the perforators arising from the circle of Willis

*Knabe*

**08.40 | Dissection**

Surgical anatomy of the perforators arising from the circle of Willis

*Knabe*

**09.40 | Break**

**10.00 | Lecture**

Approaching an anterior communicating artery aneurysm

*Krisht*

**13.00 | Lunch**

**14.00 | Hands-on**

Approaching an anterior communicating artery aneurysm

*Krisht*

**18.00 | End of Hands-on**

**19.00 | Event Dinner** Chesa Rössli, Moevenpick Hotel

**Sunday, 10th December 2017**

**08.00 | Lecture**

Approaching a basilar aneurysm; transcavernous

*Krisht*

**09.00 | Hands-on**

Approaching a basilar aneurysm; transcavernous

*Krisht*

**12.00 | Lunch**

**13.00 | Lecture**

Approaching a pericallosal aneurysm; interhemispheric

*Bertalanffy*

**14.00 | Hands-on**

Approaching a pericallosal aneurysm; interhemispheric

*Bertalanffy*

**16.00 | Closing Remarks**

## FURTHER INFORMATION

### Guest Faculty

**Prof. Ali F. Krisht, MD, FACS**

Arcansas Neurosience Institute – ANI, Little Rock (USA)

**Prof. Helmut Bertalanffy, MD, PhD**

International Neuroscience Institute – INI, Hannover (Germany)

**Prof. Wolfgang Knabe, MD, PhD**

Prosektur der Anatomie, Münster (Germany)

### Faculty

R. Hahn, S. Georgiev, O. Altabit, P. Fistouris, M. Hahn

### Number of Workstations

6 Workstations

18 active participants

20 passive participants

### Language

English & German

### Fee

Active: 600 € (full attendance; lectures and laboratory)

Passive: 150 € (excepting Hands-on)

### Accreditation

3rd International Hands-on Cadaver Workshop will be accredited by the Deutsche Ärztekammer Westfalen Lippe.

### Contact

Gabriele Kuehling

phone 0049-251 976-2401

fax 0049-251 976-2402

neurochirurgie@clemenshospital.de

## REPLY

Please sign in to **15th November 2017** by fax to the number 0049-251 976-2402 or mail to [neurochirurgie@clemenshospital.de](mailto:neurochirurgie@clemenshospital.de). You can also use the electronic registration form on [www.clemenshospital.de](http://www.clemenshospital.de)

I sign in as an active participant

I sign in as a passive participant

name, first name: \_\_\_\_\_

institution: \_\_\_\_\_

street: \_\_\_\_\_

postal code, town: \_\_\_\_\_

phone: \_\_\_\_\_

mail: \_\_\_\_\_

Clemenshospital Münster  
Neurochirurgische Klinik  
Düesbergweg 124  
D - 48153 Münster